

Location: ZIP 33432

Property Types: Condo/Townhouse, Condo - All Properties - All Properties - All Properties

Price Range: \$0 - No Limit

SQFT Range: 0 - No Limit

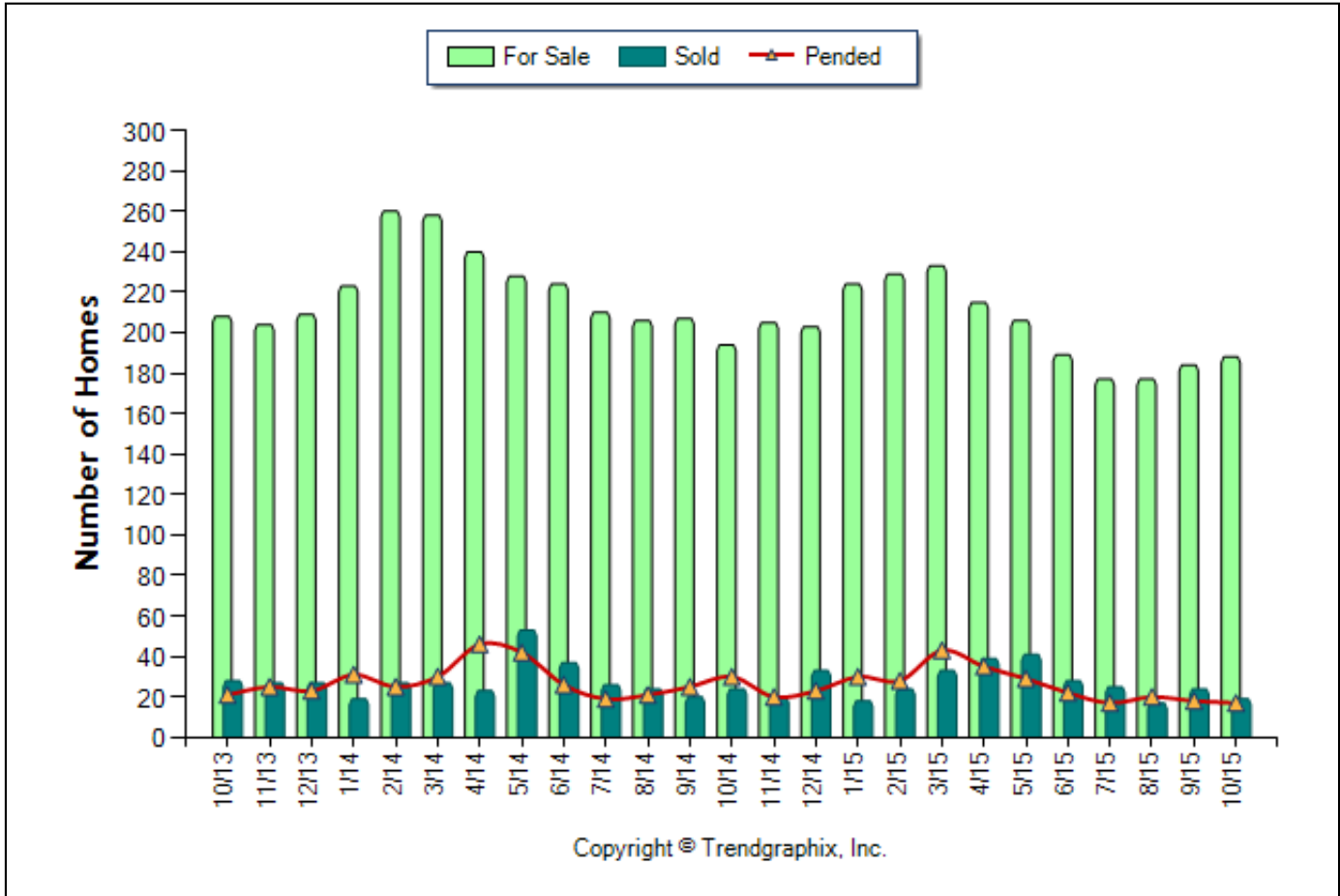
Bedrooms: 0 - No Limit

Full Baths: 0 - No Limit

Half Baths: 0 - No Limit

Year Built: 0 - No Limit

Number of Homes For Sale vs. Sold vs. Pended (Last 2 years)



	Curnt vs. Prev Month			Curnt vs. Same Month 1 Yr Ago			Curnt vs. Same Qtr 1 Yr Ago			Curnt vs. Same Month 2 Yrs Ago			Curnt vs. Same 12 Months 1 Yr Ago		
	Oct. 15	Sep. 15	% Change	Oct. 15	Oct. 14	% Change	Aug. 15 to Oct. 15	Aug. 14 to Oct. 14	% Change	Oct. 15	Oct. 13	% Change	Nov. 14 to Oct. 15	Nov. 13 to Oct. 14	% Change
For Sale	188	184	2.2% ▲	188	194	-3.1% ▼	549	607	-9.6% ▼	188	208	-9.6% ▼	2430	2663	-8.7% ▼
Sold	19	24	-20.8% ▼	19	24	-20.8% ▼	60	68	-11.8% ▼	19	28	-32.1% ▼	321	334	-3.9% ▼
Pended	17	18	-5.6% ▼	17	30	-43.3% ▼	55	76	-27.6% ▼	17	21	-19% ▼	302	343	-12% ▼

October 2015 is a Buyer's market**

Home For Sale in October 2015 is 188 units. It is up **2.2%** compared to the last month and down **3.1%** compared to the last year.
Home Closed in October 2015 is 19 units. It is down **20.8%** compared to the last month and down **20.8%** compared to the last year.
Home Placed under Contract in October 2015 is 17 units. It is down **5.6%** compared to the last month and down **43.3%** compared to the last year.

**Buyer's market: more than 6 months of inventory based on closed sales. Seller's market: less than 3 months of inventory based on closed sales. Neutral market: 3 - 6 months of inventory based on closed sales.

All reports are published November 2015, based on data available at the end of October 2015. This representation is based in whole or in part on data supplied by the Beaches MLS (Realtor Association of the Palm Beaches, Jupiter-Tequesta-Hobe Sound AOR, Realtor Association of St. Lucie), Realtor Association of Miami, the Greater Fort Lauderdale Realtors, or the Southeast Florida Multiple Listing Service (MLS). Neither the Board or its MLS guarantees or is in any way responsible for its accuracy. Data maintained by the Board or its MLS may not reflect all real estate activity in the market.



Location: ZIP 33432

Property Types: Condo/Townhouse, Condo - All Properties - All Properties - All Properties

Price Range: \$0 - No Limit

SQFT Range: 0 - No Limit

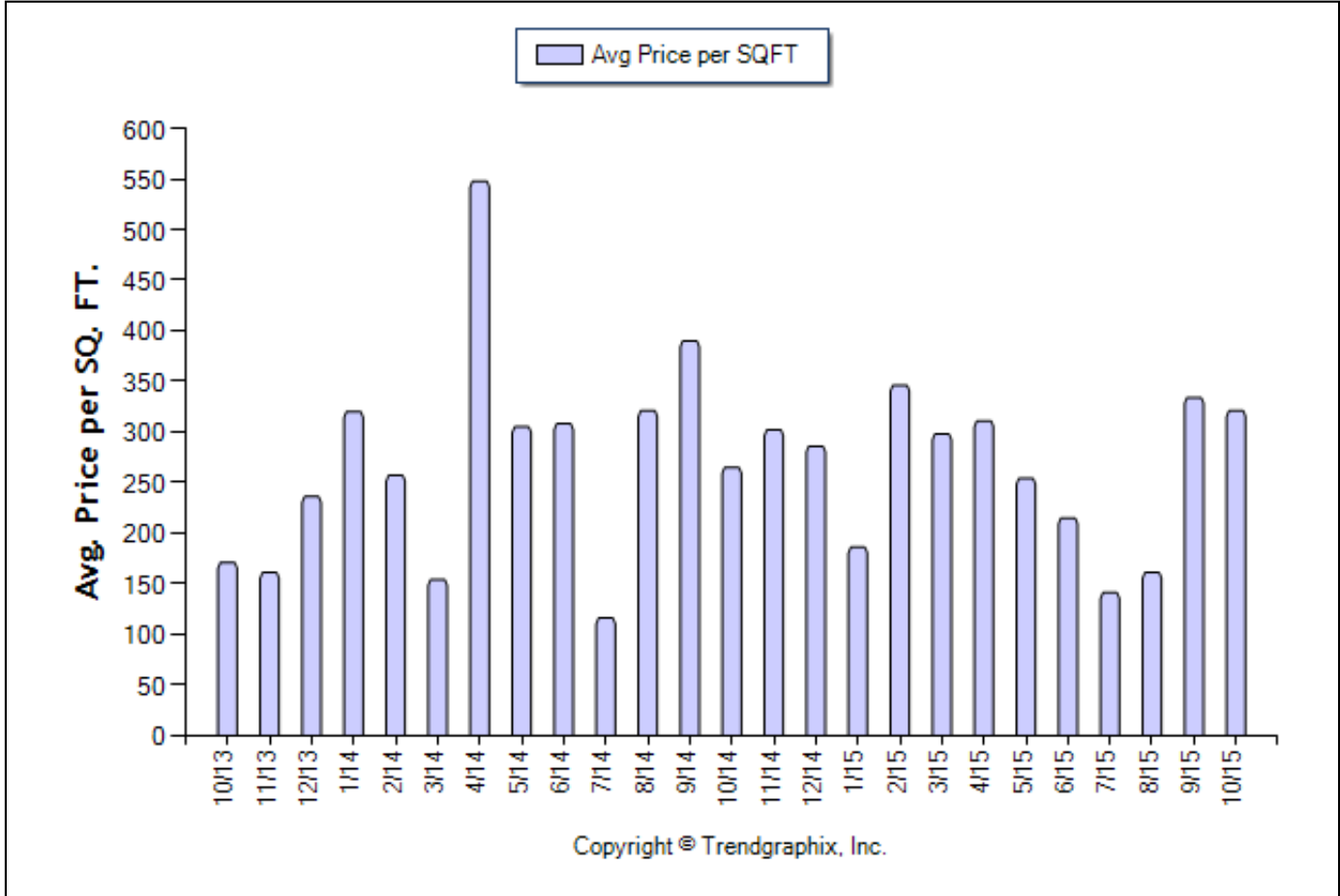
Bedrooms: 0 - No Limit

Full Baths: 0 - No Limit

Half Baths: 0 - No Limit

Year Built: 0 - No Limit

Average Price per SQFT (Sold) (Last 2 years)



	Curnt vs. Prev Month			Curnt vs. Same Month 1 Yr Ago			Curnt vs. Same Qtr 1 Yr Ago			Curnt vs. Same Month 2 Yrs Ago			Curnt vs. Same 12 Months 1 Yr Ago		
	Oct. 15	Sep. 15	% Change	Oct. 15	Oct. 14	% Change	Aug. 15 to Oct. 15	Aug. 14 to Oct. 14	% Change	Oct. 15	Oct. 13	% Change	Nov. 14 to Oct. 15	Nov. 13 to Oct. 14	% Change
Avg. Sq. Ft. Price	321.3	333.6	-3.7% ▼	321.3	264.8	21.3% ▲	280.9	321.5	-12.6% ▼	321.3	171.1	87.8% ▲	267.6	278.3	-3.8% ▼

October 2015 Average Sold Price per Square Footage is Neutral**

Average Sold Price per Square Footage in October 2015 is \$321. It is down **3.7%** compared to the last month and up **21.3%** compared to the last year.

**Based on 6 month trend - Appreciating/Depreciating/Neutral.

All reports are published November 2015, based on data available at the end of October 2015. This representation is based in whole or in part on data supplied by the Beaches MLS (Realtor Association of the Palm Beaches, Jupiter-Tequesta-Hobe Sound AOR, Realtor Association of St. Lucie), Realtor Association of Miami, the Greater Fort Lauderdale Realtors, or the Southeast Florida Multiple Listing Service (MLS). Neither the Board or its MLS guarantees or is in any way responsible for its accuracy. Data maintained by the Board or its MLS may not reflect all real estate activity in the market.



Location: ZIP 33432

Property Types: Condo/Townhouse, Condo - All Properties - All Properties - All Properties

Price Range: \$0 - No Limit

SQFT Range: 0 - No Limit

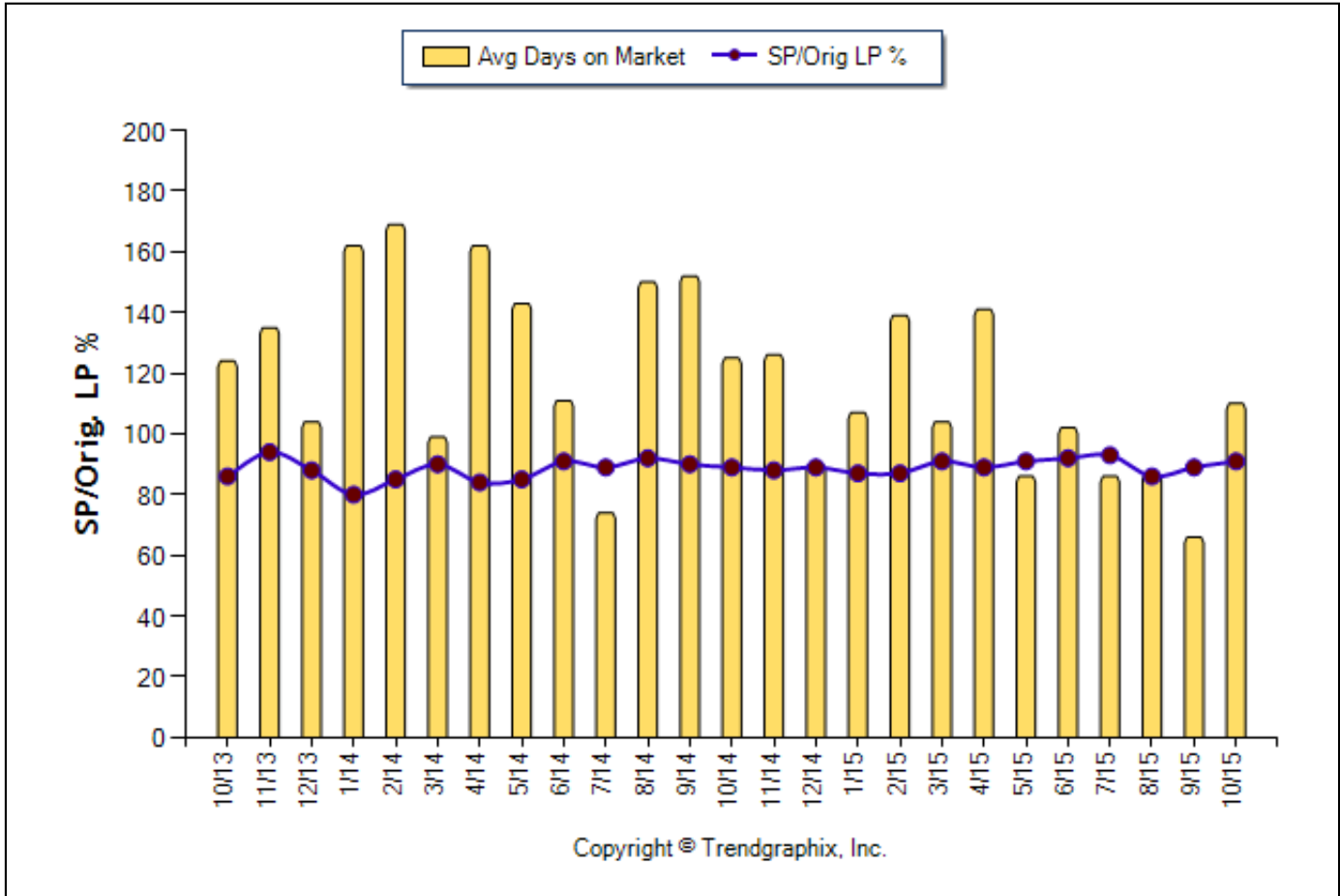
Bedrooms: 0 - No Limit

Full Baths: 0 - No Limit

Half Baths: 0 - No Limit

Year Built: 0 - No Limit

Avg Days On Market & SP/Orig LP % (Last 2 years)



Copyright © Trendgraphix, Inc.

	Curnt vs. Prev Month			Curnt vs. Same Month 1 Yr Ago			Curnt vs. Same Qtr 1 Yr Ago			Curnt vs. Same Month 2 Yrs Ago			Curnt vs. Same 12 Months 1 Yr Ago		
	Oct. 15	Sep. 15	% Change	Oct. 15	Oct. 14	% Change	Aug. 15 to Oct. 15	Aug. 14 to Oct. 14	% Change	Oct. 15	Oct. 13	% Change	Nov. 14 to Oct. 15	Nov. 13 to Oct. 14	% Change
Days on Market	110	66	66.7% ▲	110	125	-12% ▼	86	142	-39.4% ▼	110	124	-11.3% ▼	104	131	-20.6% ▼
Sold/Orig LP Diff. %	91	89	2.2% ▲	91	89	2.2% ▲	89	90	-1.1% ▼	91	86	5.8% ▲	90	88	2.3% ▲

October 2015 Average Days on Market trend Remains Steady**

Average Days on Market in October 2015 is 110. It is up **66.7%** compared to the last month and down **12%** compared to the last year.

October 2015 Sold/Original List Price Ratio Remains Steady**

Sold/Original List Price % in October 2015 is 91%. It is up **2.2%** compared to the last month and up **2.2%** compared to the last year.

**Based on 6 month trend - Rising/Falling/Remains Steady.

All reports are published November 2015, based on data available at the end of October 2015. This representation is based in whole or in part on data supplied by the Beaches MLS (Realtor Association of the Palm Beaches, Jupiter-Tequesta-Hobe Sound AOR, Realtor Association of St. Lucie), Realtor Association of Miami, the Greater Fort Lauderdale Realtors, or the Southeast Florida Multiple Listing Service (MLS). Neither the Board or its MLS guarantees or is in any way responsible for its accuracy. Data maintained by the Board or its MLS may not reflect all real estate activity in the market.

Location: ZIP 33432

Property Types: Condo/Townhouse, Condo - All Properties - All Properties - All Properties

Price Range: \$0 - No Limit

SQFT Range: 0 - No Limit

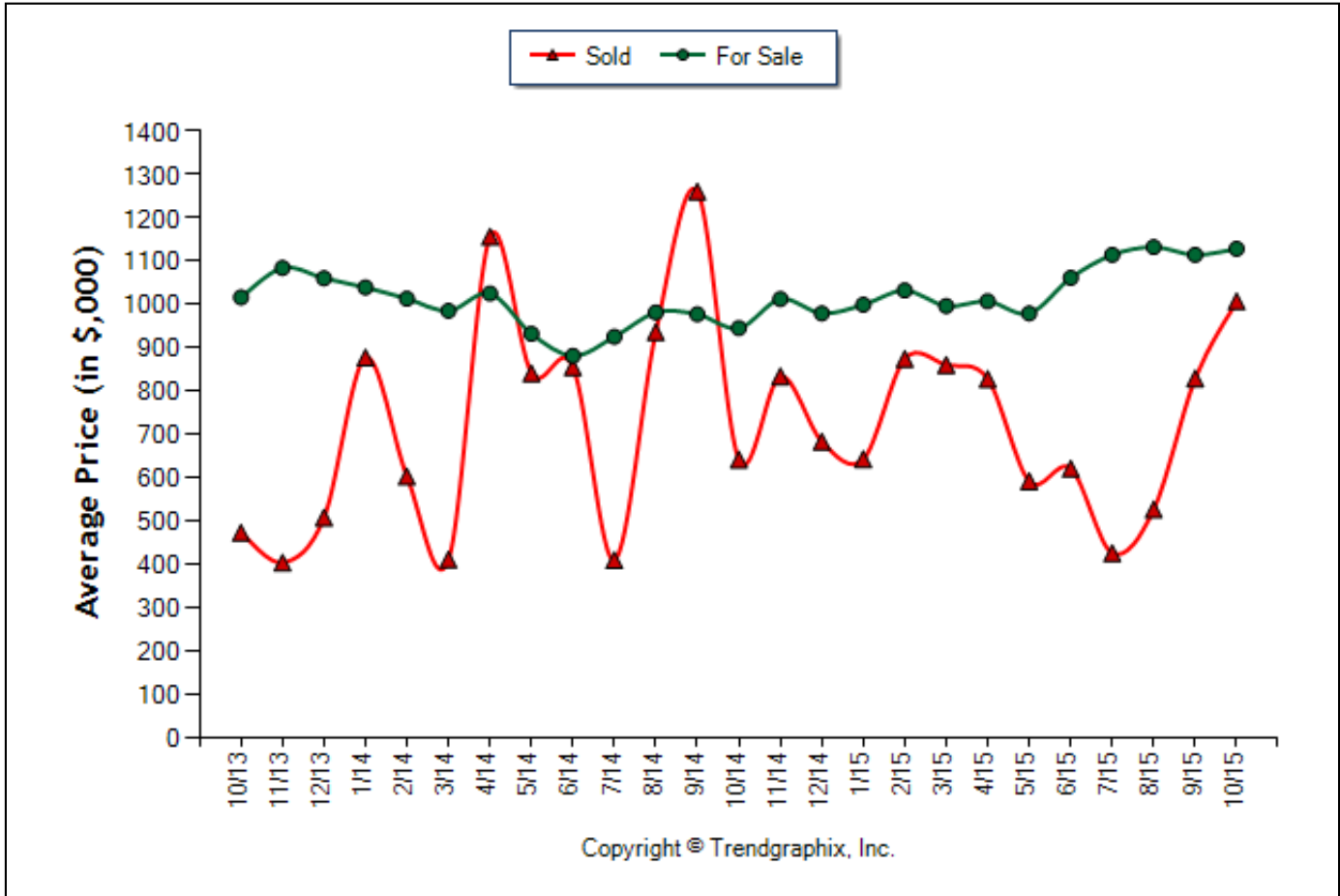
Bedrooms: 0 - No Limit

Full Baths: 0 - No Limit

Half Baths: 0 - No Limit

Year Built: 0 - No Limit

Average Price of For Sale and Sold (Last 2 years)



	Curnt vs. Prev Month			Curnt vs. Same Month 1 Yr Ago			Curnt vs. Same Qtr 1 Yr Ago			Curnt vs. Same Month 2 Yrs Ago			Curnt vs. Same 12 Months 1 Yr Ago		
	Oct. 15	Sep. 15	% Change	Oct. 15	Oct. 14	% Change	Aug. 15 to Oct. 15	Aug. 14 to Oct. 14	% Change	Oct. 15	Oct. 13	% Change	Nov. 14 to Oct. 15	Nov. 13 to Oct. 14	% Change
Avg. Active Price	1127	1113	1.3% ▲	1127	944	19.4% ▲	1124	967	16.2% ▲	1127	1015	11% ▲	1041	986	5.6% ▲
Avg. Sold Price	1006	828	21.5% ▲	1006	641	56.9% ▲	799	927	-13.8% ▼	1006	472	113.1% ▲	724	733	-1.2% ▼

October 2015 Average For Sale Price is Neutral**

Average For Sale Price (in thousand) in October 2015 is \$1127. It is up **1.3%** compared to the last month and up **19.4%** compared to the last year.

October 2015 Average Sold Price is Appreciating**

Average Sold Price (in thousand) in October 2015 is \$1006. It is up **21.5%** compared to the last month and up **56.9%** compared to the last year.

**Based on 6 month trend - Appreciating/Depreciating/Neutral.

All reports are published November 2015, based on data available at the end of October 2015. This representation is based in whole or in part on data supplied by the Beaches MLS (Realtor Association of the Palm Beaches, Jupiter-Tequesta-Hobe Sound AOR, Realtor Association of St. Lucie), Realtor Association of Miami, the Greater Fort Lauderdale Realtors, or the Southeast Florida Multiple Listing Service (MLS). Neither the Board or its MLS guarantees or is in any way responsible for its accuracy. Data maintained by the Board or its MLS may not reflect all real estate activity in the market.

Location: ZIP 33432

Property Types: Condo/Townhouse, Condo - All Properties - All Properties - All Properties

Price Range: \$0 - No Limit

SQFT Range: 0 - No Limit

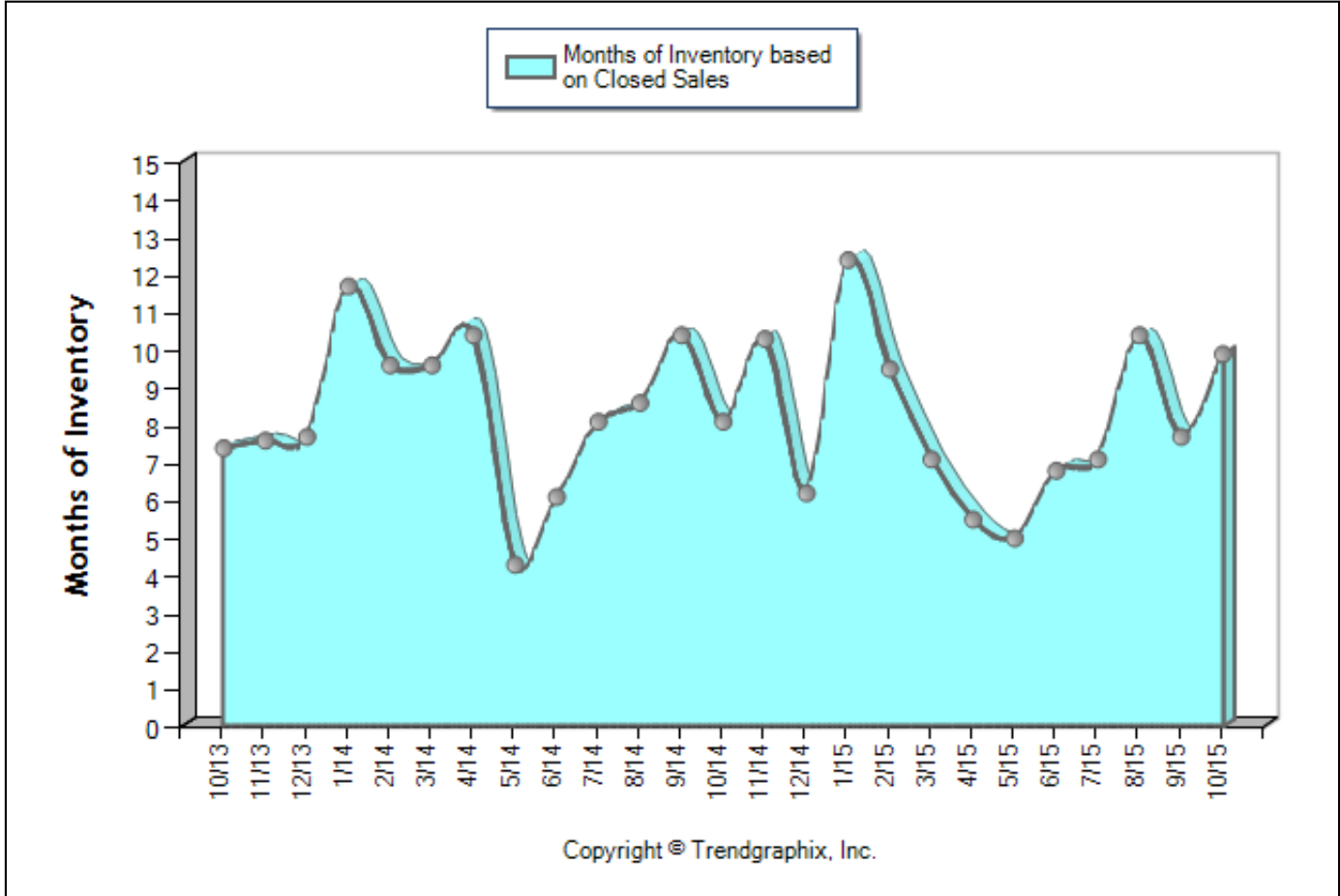
Bedrooms: 0 - No Limit

Full Baths: 0 - No Limit

Half Baths: 0 - No Limit

Year Built: 0 - No Limit

Months of Inventory Based on Closed Sales (Last 2 years)



	Curnt vs. Prev Month			Curnt vs. Same Month 1 Yr Ago			Curnt vs. Same Qtr 1 Yr Ago			Curnt vs. Same Month 2 Yrs Ago			Curnt vs. Same 12 Months 1 Yr Ago		
	Oct. 15	Sep. 15	% Change	Oct. 15	Oct. 14	% Change	Aug. 15 to Oct. 15	Aug. 14 to Oct. 14	% Change	Oct. 15	Oct. 13	% Change	Nov. 14 to Oct. 15	Nov. 13 to Oct. 14	% Change
Months of Inventory (Closed Sales)	9.9	7.7	28.7% ▲	9.9	8.1	22.3% ▲	9.2	8.9	3.4% ▲	9.9	7.4	33.7% ▲	7.6	8	-5% ▼

October 2015 is a Buyer's market**

Months of Inventory based on Closed Sales in October 2015 is 9.9. It is up **28.7%** compared to the last month and up **22.3%** compared to the last year.

**Buyer's market: more than 6 months of inventory based on closed sales. Seller's market: less than 3 months of inventory based on closed sales. Neutral market: 3 - 6 months of inventory based on closed sales.

All reports are published November 2015, based on data available at the end of October 2015. This representation is based in whole or in part on data supplied by the Beaches MLS (Realtor Association of the Palm Beaches, Jupiter-Tequesta-Hobe Sound AOR, Realtor Association of St. Lucie), Realtor Association of Miami, the Greater Fort Lauderdale Realtors, or the Southeast Florida Multiple Listing Service (MLS). Neither the Board or its MLS guarantees or is in any way responsible for its accuracy. Data maintained by the Board or its MLS may not reflect all real estate activity in the market.

Facts and TrendsTM - Published November 2015*



Location: ZIP 33432

Property Types: Condo/Townhouse, Condo - All Properties - All Properties - All Properties

Price Range: \$0 - No Limit

SQFT Range: 0 - No Limit

Bedrooms: 0 - No Limit

Full Baths: 0 - No Limit

Half Baths: 0 - No Limit

Year Built: 0 - No Limit

Date	10/13	11/13	12/13	1/14	2/14	3/14	4/14	5/14	6/14	7/14	8/14	9/14	10/14	11/14	12/14	1/15	2/15	3/15	4/15	5/15	6/15	7/15	8/15	9/15	10/15
For Sale	208	204	209	223	260	258	240	228	224	210	206	207	194	205	203	224	229	233	215	206	189	177	177	184	188
New Listing	46	51	33	68	71	42	44	57	32	25	38	44	39	42	37	68	54	57	42	32	33	28	31	41	41
Sold	28	27	27	19	27	27	23	53	37	26	24	20	24	20	33	18	24	33	39	41	28	25	17	24	19
Pended	21	25	23	31	25	30	46	42	26	19	21	25	30	20	23	30	28	43	35	29	22	17	20	18	17
Months of Inventory (Closed Sales)	7.4	7.6	7.7	11.7	9.6	9.6	10.4	4.3	6.1	8.1	8.6	10.4	8.1	10.3	6.2	12.4	9.5	7.1	5.5	5	6.8	7.1	10.4	7.7	9.9
Months of Inventory (Pended Sales)	9.9	8.2	9.1	7.2	10.4	8.6	5.2	5.4	8.6	11.1	9.8	8.3	6.5	10.3	8.8	7.5	8.2	5.4	6.1	7.1	8.6	10.4	8.9	10.2	11.1
Absorption Rate (Closed Sales) %	13.5	13.2	12.9	8.5	10.4	10.5	9.6	23.2	16.5	12.4	11.7	9.7	12.4	9.8	16.3	8	10.5	14.2	18.1	19.9	14.8	14.1	9.6	13	10.1
Absorption Rate (Pended Sales) %	10.1	12.3	11	13.9	9.6	11.6	19.2	18.4	11.6	9	10.2	12.1	15.5	9.8	11.3	13.4	12.2	18.5	16.3	14.1	11.6	9.6	11.3	9.8	9
Avg. Active Price	1015	1083	1059	1038	1012	984	1024	931	880	924	980	976	944	1011	978	998	1031	995	1006	978	1060	1113	1131	1113	1127
Avg. Sold Price	472	403	507	876	602	410	1155	840	854	409	935	1259	641	833	682	642	873	859	827	591	620	425	526	828	1006
Avg. Sq. Ft. Price	171	161	236	320	257	154	548	305	308	116	321	390	265	302	286	186	346	298	311	254	215	141	161	334	321
Sold/List Diff. %	93	94	89	86	89	95	94	91	94	91	94	92	91	90	91	90	91	92	91	93	95	93	94	94	92
Sold/Orig LP Diff. %	86	94	88	80	85	90	84	85	91	89	92	90	89	88	89	87	87	91	89	91	92	93	86	89	91
Days on Market	124	135	104	162	169	99	162	143	111	74	150	152	125	126	90	107	139	104	141	86	102	86	87	66	110
Median	423	400	419	690	390	380	664	610	667	341	346	659	445	578	412	398	591	505	600	525	450	302	350	503	445

All reports are published November 2015, based on data available at the end of October 2015. This representation is based in whole or in part on data supplied by the Beaches MLS (Realtor Association of the Palm Beaches, Jupiter-Tequesta-Hobe Sound AOR, Realtor Association of St. Lucie), Realtor Association of Miami, the Greater Fort Lauderdale Realtors, or the Southeast Florida Multiple Listing Service (MLS). Neither the Board or its MLS guarantees or is in any way responsible for its accuracy. Data maintained by the Board or its MLS may not reflect all real estate activity in the market.